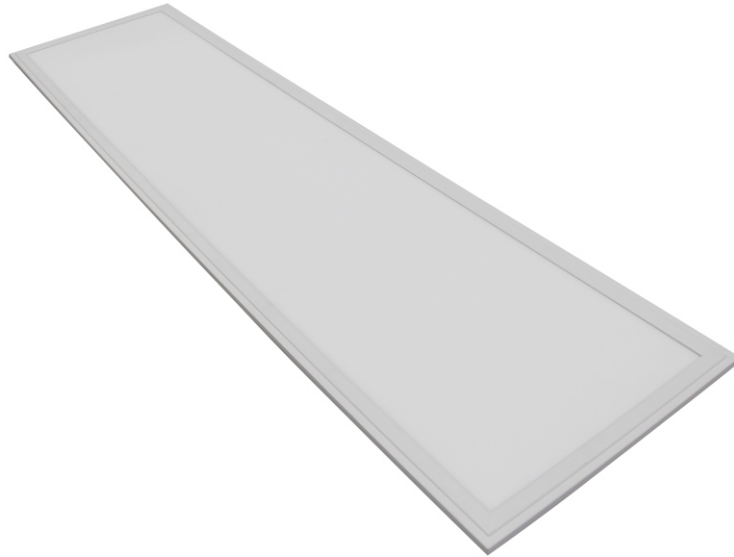




3012 LED Panel Light



Description

LED Square Panel Light can perfectly replace traditional downlight. Using Light Guide Plate, it has the feature of uniform and smooth light beam, low glare rating, low light pollution, and excellent protection from eyestrain. It can be widely used as interior lighting in shops, supermarkets, malls and hospitals, etc

Features

1. Visual uniformity

- The edge-lit LED panels blend with various ceiling details and produce soft natural light

2. Low glare lighting

- The edge mounted LEDs give even glare free special illumination. It produces a comfortable lighting environment.

3. LED efficiency

- High lumen LED efficacy paired with high power factor drivers reduce operating cost.

4. Luminaire construction

- A powder coat painted extruded aluminum frame encompasses the perimeter of multi-layered acrylic panel system.

5. Cost and energy saving

- 50% more energy saving effect than fluorescent tubes.
- Low heat generation, extra energy saving effect through reduction of HVAC load.
- Easy installation: only 3 steps in 2 minutes, labor cost saving
- Around 9mm lamp body with very light weight, space and transportation cost saving

6. Long life time

- More than 50,000 hours life time and 3 years warranty.





Specifications

Model #	CCT	LED Type	Lumen(lm) (±10%)	CRI	Beam angle	Power(W) (±10%)	Voltage (V)	PF	Weight (Kg)
SC-PSC24CE3012-F35W	5000-6500K	2835	2837lm	>80	110°	35W	AC100-240V 50-60Hz	>0.95	3.51
SC-PSC24NE3012-F35W	3700-4500K		2652lm	>80	110°	35W			
SC-PSC24WE3012-F35W	2700-3200K		2413lm	>80	110°	35W			
SC-PSC24CE3012-F45W	5000-6500K	2835	3754lm	>80	110°	45W	AC100-240V 50-60Hz	>0.95	3.51
SC-PSC24NE3012-F45W	3700-4500K		3770lm	>80	110°	45W			
SC-PSC24WE3012-F45W	2700-3200K		3505lm	>80	110°	45W			

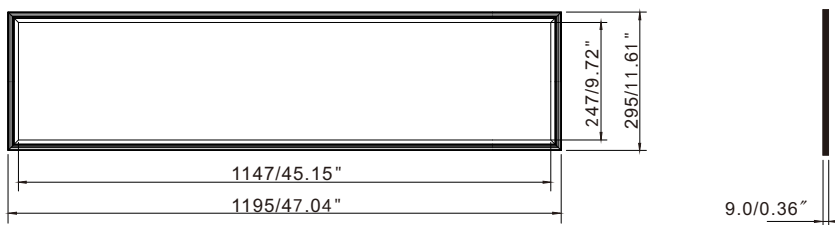
Applications

- Hotels
- Conference/Meeting rooms
- Factories and offices
- Commercial purposes
- Residential / Institution buildings
- Schools, colleges, universities and hospitals
- Places which needs energy saving and high color rendering index lighting.

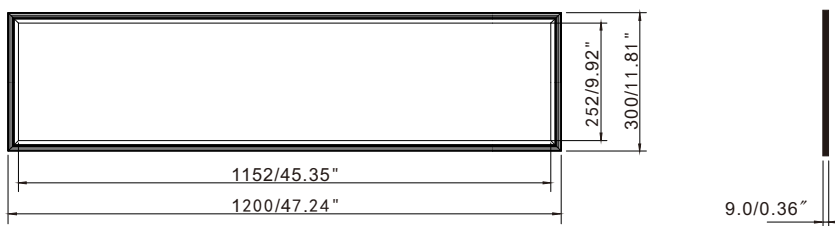


Dimensions (Unit: mm)

295*1195



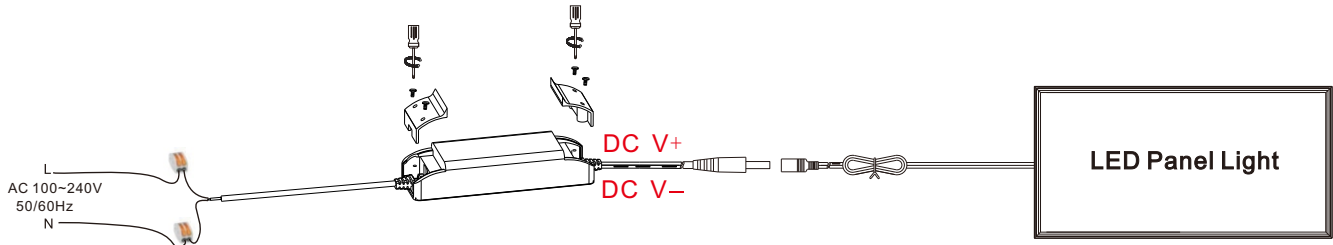
300*1200



All dimension tolerance is ±0.5mm unless otherwise noted.

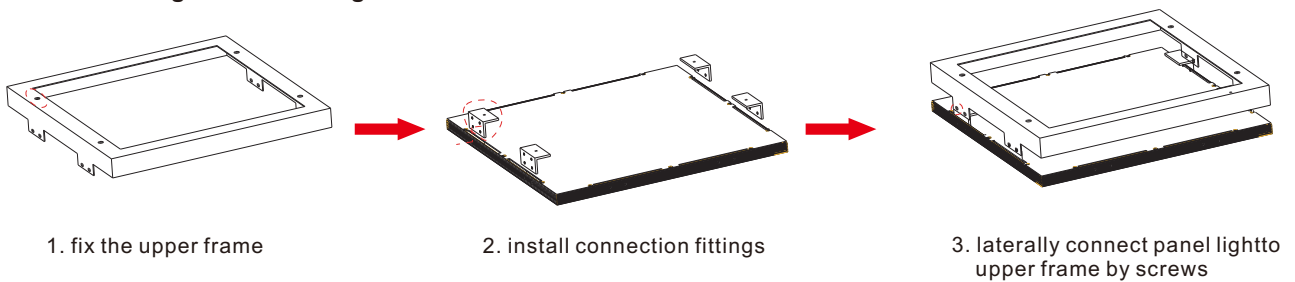


Electrical Connection

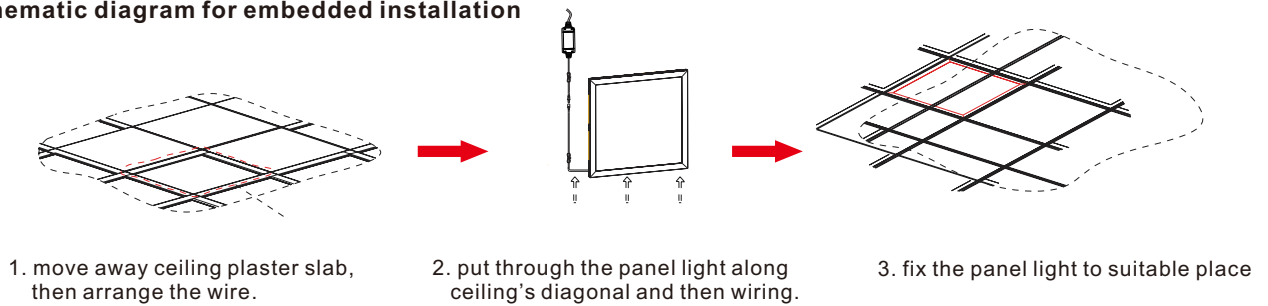


Installation Drawing

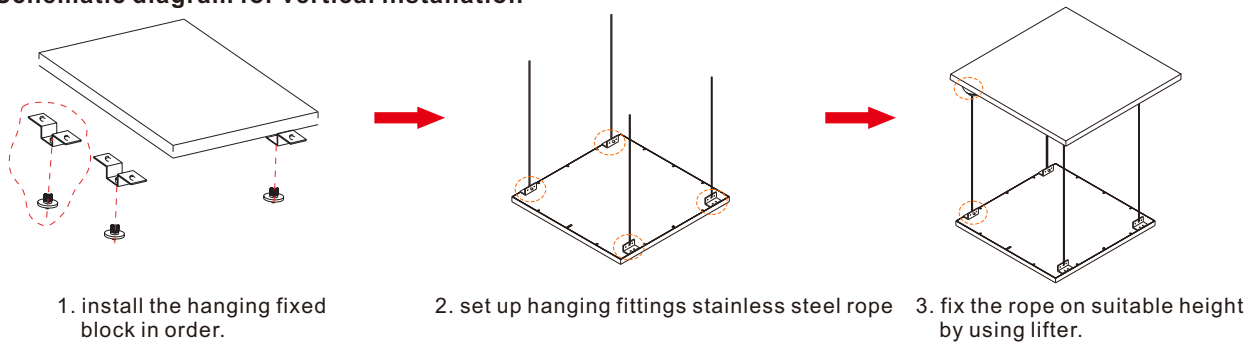
Schematic diagram for ceiling installation



Schematic diagram for embedded installation



Schematic diagram for vertical installation

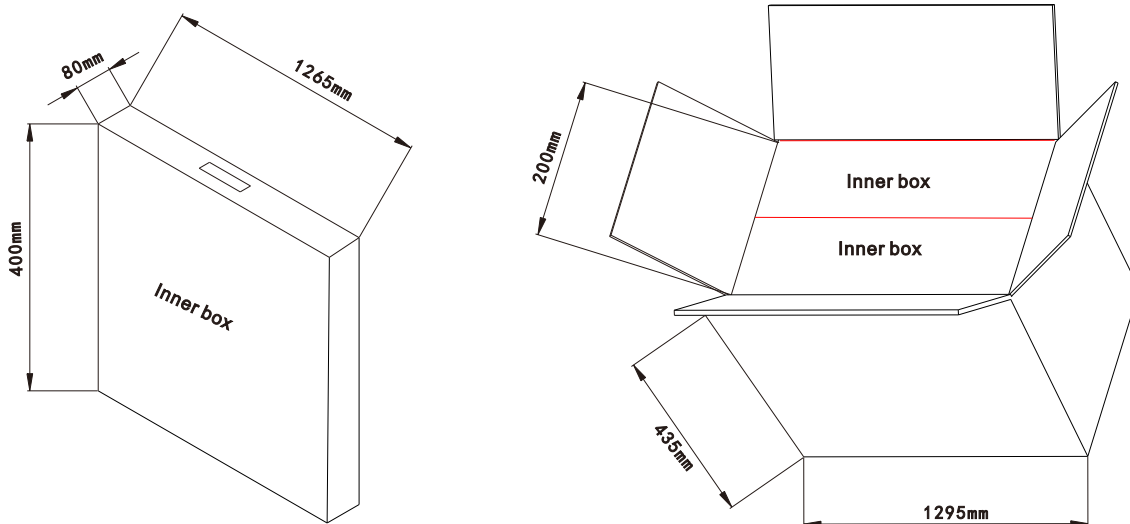




Product packaging information:

1. Net weight: 3.51kg
2. Gross weight/Carton: 17.9kg
3. Packing size: 1295X200X435mm
4. 2pcs per inner box, 2 inner boxes per carton.

All dimension units are millimeter.



! Notice

1. Please read the specification first, to make sure the service environment matches the condition in the specification before using.
2. Please confirm the applicable power supply before using.
3. Make sure the switch of product is off before connect to the power supply to prevent electric shock.
4. Operation against rules may damage your property even harm to your personal safety.
5. Preliminarily estimate required quantity of LED panel lights, then according to the power rating of single panel light to figure out the total power and design power supply plan.
6. Dangerous high voltage, Non-professionals are not allowed to maintain the products.
7. If the exterior flexible cable or wire is damaged, it must exchange by the supplier, its agent or other similar qualified personnels to avoid dangers.